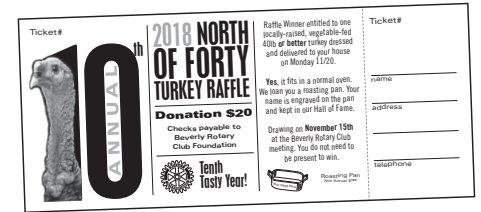


Oct 18, 2018



Beverly Rotary Club Sprocket Newsletter

SCARY!!!!



Nothing is scarier than a wild turkey (the bird NOT the drink), but you have a chance to get back at those fowl birds. You can buy a North of Forty Raffle ticket or pawn off to your friends, either way more than likely to be tastier and more appetizing than our regular lunch at Rotary. For the record 10th year we will be supporting the Rotary Foundation which in turns help fight Polio and other mighty worthy causes. You need to sell 5 tickets or more if you like. Plus when you win you'll enjoy the bird that Ben Franklin thought should be the national bird. (Ben didn't get them all right). Sell baby sell drawing held on November 15th you have lots of time to peddle those tickets!!



I like the choices of deli meats and cheeses!



I like the soup

A lunch so vile, so hideous that it would never pass even the one way test!!! Once a week it rears it's ugly mug from the depths of the Danversport River and renders its consumers to a host of dietary distress, GLUTEN FREE, LACTOSE INTOLERANT, VEGAN!! The earth may never recover, will YOU!!!

Financial Advice



MONEY MATT-ers

Dear Matt,
What candies do you value more around Halloween?
– Candy on Cabot Street

Dear Candy,
Is that you're real name? You're parents were visionaries. It is the age old battle between Chocolate or something fruity or sour. I like Reeses PB cups but my son James prefers Starburst fruit chews, which ironically have no fruit. We decided what is best by Greco-Roman wrestling. James won but I still had my Reeses anyway, I will never give up my candy jones. May your drives be true and your putts delightful as they drop.
– Matt



Last weeks speaker
Gwen Ryan came today from the Grateful Friends of Cape Anne: Grateful Friends of Cape Anne is 100% volunteer, 100% donation sponsored support group for people struggling with Cancer. A topic that effects everybody it was very interesting. Josephine McCullough former president of Manchester Essex club, a friend as well joined her in the photo opp. Gwen with mug.



New member
Who puts the grrrr, in Greater Beverly Chamber, why its no other than our latest member, Leslie Gould. As a friend of Dr Jamie's she was suckered into this club, although this is her 3rd club. Due to snide attitude we will not name other two clubs. We will here more about her exciting adventures down the road when she gives a classification speech. In the meantime don't be shy go sign her book, its your're duty.



No rain, no pain!
Despite the cold and rain Dr Beckman and Fergus Pituitary braved the elements to walk for Family Promise last Saturday. A great turnout even with the rain. After the walk a hot bowl of soup and hot shower, with their respective wives made it all worthwhile, oh yeah we still have it DApice!!!!!!



Matthew H. Piaker, JD, LLM, AIF®
Tel: 978-927-3123
Email: mpiaker@cfaemail.com
100 Cummings Center, Ste. 207P
Beverly, MA 01915
www.capitolfinancialadvisors.com

CIFIA
CAPITOL FINANCIAL ADVISORS

Securities and Advisory Services offered through Commonwealth Financial Network, Member FINRA/SIPC. Advisory services offered by Capitol Financial Advisors, a registered investment adviser, are separate and unrelated to Commonwealth.

Business banking right here where you do business.

BEVERLY BANK
YOUR COMMUNITY BANK

MEMBER FDIC MEMBER SIF

montserrat College of Art
where creativity works

visual art & design education
continuing education for all ages
public art galleries
beverly, ma | www.montserrat.edu

The Mega Group
Commercial Real Estate

BRIAN DAPICE & ASSOCIATES, LLC

BEVERLY 978-922-6400
DANVERS 978-762-9771

www.TheMegaGroup.net

Specializing in
Retail Sales & Leasing, Developable Land
and Multi-Family Investments

Temkin Financial Group, LLC

"Your family is here to enjoy life... our family is here to plan life"

Alan L. Temkin
Senior Financial Planner

301 Edgewater Place, Suite 200
Wakefield, MA 01880
Main 781-876-4175
Fax 781-876-4199
atemkin@temkinfinancial.com

www.linkedin.com/in/alan-temkin-1150676
www.facebook.com/TemkinFinancialGroup

Securities, investment advisory and financial planning services offered through qualified registered representatives of MML Investors Services, LLC. Member SIPC. www.SIPC.org. Temkin Financial Group, LLC is not a subsidiary or affiliate of MML Investors Services, LLC or its affiliated companies. 300 Cleveland Street, 19th & 21st Floors, Boston, MA 02116. 617-385-4550. CEN201809-214149

MCJ Insurance Agency, Inc.

Michael C. Jones
President

www.mcjinsuranceagency.com

Phone 978-338-4670 409A Cabot Street
Fax 978-522-8388 Beverly, MA 01915
Mobile 978-828-5822 mike@mcjins.com

True to our Communities

We are proud to support the
Beverly Rotary Club



STERLING
INSURANCE AGENCY, INC.

Established in 1929 & Still Growing!
Auto • Home • Business • Health • Life

Richard F. Mooney Jr.
president

306 Cabot Street, Beverly, MA
(978) 922-6600

Desjardins
E W E L E R S

978-922-2149

Commodore Plaza,
47 Enon Street
Beverly, MA 01915-3601

The leading provider of custom-designed
workforce training programs.

NORTH SHORE COMMUNITY COLLEGE
Corporate Training SOLUTIONS
Train your people. Transform your company.

Dianne Palter Gill, Ed.D.
978-236-1225
dpalterg@northshore.edu
corporate.northshore.edu

Last week at the Beverly Rotary Club...

The Meeting was called to order by Matt Piaker at 12:15pm. Chet Marcus lead the group in Pledge of Allegiance Diane and Freddie chose the song – Take me out to the ball game. Peter Hersey provided the Invocation.

Guests and Visitors:

Sue Osborne shared the guests and visitors – Tyler Hall came as a guest of Leslie Gould (intern for the Beverly Chamber) Lorenzo Jagor - guest of Bill Beckman Mike McCullough – guest of the club (Past president of the Manchester Essex Rotary Club) Gwen Ryan – Speaker in today for the Grateful Friend of Cape Ann

Visiting Rotarians:

Josephine McCullough current President of Manchester Essex Rotary Club

Announcements:

Role Positions Switched – Dylan is now the Assistant Treasurer, Susan Osborne is now the Treasurer for the club.

Birthdays:

Ellen Dunn's birthday 10/15 – Happy 39th to you. David Contarino 10/11 – Happy Birthday to you.

DATES to Watch:

10th Annual TURKEY RAFFLE is being kicked off next week! Wednesday October 24th is

WORLD POLIO DAY! MONDAY NIGHT October 22nd 6pm to 9pm is the Young life of the North Shore is having an event at the Danversport Yacht Club. Nick Biancucci has a table going and he needs to fill it - Please reach out so that you can make an effort to attend.

Saturday – October 13th – Join Bill Beckman and Brian Murphy in a 5k walk starting at Lynch Park to benefit Family Promise.

Induction of a New Member:

Leslie Gould was inducted into the club by Jamie Engle.

Sargent: Bob Murphy

Late comer's Bill Scanlon – but because we all missed him so much and was glad he made it back several members paid his fine. Glad you are back Bill!

Yankee fans got fined \$5 for the loss to the Red Sox recently. A sweet taste of victory for most of us.

Bill Beckman paid \$5 to recognize Lorenzo Jagor

Matt Piaker paid \$100 for being invited by Derrek Maxfield to play at Kernwood.

Jackie stood up and let us know that she is off to Porta Verde – Say hello to Isaac, Gofer and Captain Stubing for us while you are there.

Russ Queen was fined \$10 for telling Bob Murphy that we shouldn't be doing his homework for him.

Mike Harrington was fined \$5 for the Hurricane Michael.

Sue Gabriel was recognized as a Corporator of Marblehead bank as was Brian D'Apice. They were both

fined \$5. Dave Contarino was fined for getting Sean Gallagher to be the football coach, then the superintendent of schools.

Maria's Pizza is closing – and everyone that never went was fined \$5. The Youth Executive Table failed on the Topsfield Fair questions : How many hotdogs consumed for the hotdog eating contest – answer was 8. They also missed the heaviest pumpkin by a mere 20 lbs. They guessed 2,138 the actual weight was 2,118 lbs. Sorry guys, Price is Right rules when guessing! Rick Mooney had the famous Mooney Wheel that Dylan learned about first hand today. Clearly the bright side of red went to the tall man – and with it a lovely Mrs. Potatohead for his troubles.

Speaker: Gwen Ryan came today from the Grateful Friends of Cape Anne:

Grateful Friends of Cape Anne is 100% volunteer, 100% donation sponsored support group for people struggling with Cancer.

Gwen shared that in 2016 over 1.6 million were diagnosed with cancer 38k in Massachusetts. In 2017 1.7 Million were diagnosed with cancer 43k were in Massachusetts.

Gwen was one of the people diagnosed in 2016. Gwen was a former business banker at Bay Bank and was a former Rotarian. She had a dream of building a house on Coffin Beach about 7 years ago and her and her husband successfully did it. She has been diagnosed with Breast cancer which is currently in remission. She got together with

...Thursday, Oct. 11, 2018

co-founder Lee Miraglia who was suffering from lung cancer (also currently in remission), and although their stories were very different their fears and challenges are the same. She typically reaches out to others in the community who has friends, neighbors, clients that are going through cancer and trying to help pay bills, go out for a movie night, go for a night out and get them re-acclimated to the community. Generally speaking they work with folks in Massachusetts but they have shared and connected with folks in California and in New Hampshire. They do have a website. One of the best ways to connect a friend, client or neighbor is to go on their website and request services.

At the end of the presentation, the current President of the Manchester Essex Rotary Club, Josephine McCullough, stood up and announced that her club raised \$500.00 for the cause and presented her with the check.

Raffle Winner:

Josephine McCullough – she did not pick the Joker – She picked the King of Spades.

Meeting Adjourned by Matt Piaker around 1:22pm.

Sprocket Author: Dylan Jones
Next Week : Bill Weihs

Eagle Strategies LLC **NEW YORK LIFE**

Edward F. Cahill, J.D., CFP®, CLU®, ChFC®
Financial Adviser

(978) 927-9352 • 306 Cabot Street, Beverly, MA 01915
ecahill@ft.newyorklife.com • www.edwardfcachill.com

Agent, New York Life Insurance Company.
Registered Representative, offering securities through NYLIFE Securities LLC,
Member FINRA/SIPC, a Licensed Insurance Agency
201 Jones Road, Fifth Floor, Waltham, MA 02451 • Tel: 781-647-4100
Eagle Strategies and NYLIFE Securities are New York Life Companies

PROMETHEUS TUTORS

KNOWLEDGE • SKILLS • REASONING

(978) 922-5540
www.prometheustutors.com

CCI Reprographics

A Full Service Copy Center
AV Rentals & Services
Serving Beverly Since 1979
Alex Ushakoff III - owner
4th generation Rotarian
Centennial Rotary President 2004-2005
Two convenient Beverly offices

110 Cabot Street 107Q Cummings Ctr
978-922-3773 978-921-1166

SHUKA Associates Inc.

Real Estate Appraisal, Appraisal Review & Consulting

John A. Shuka, MAI, SRA, AI-GRS
8 Enon Street, Suite 1B
Beverly, MA 01915
978-921-1700
www.shuka-associates.com

Wayside
rentals & leasing

OFFICE & STORAGE TRAILERS STORAGE CONTAINERS

Moving • Leasing • Rentals • Sales

800.786.3313
www.waysidetrailers.com